

Providing Sub-Sea Services Since 1999



Concrete Cutting

Advantages of Diamond Wire Cutting

Diamond wire sawing is an excellent technique for many industries including the construction industry. But what makes this technique so useful and sought-after? Here are just five of the reasons why it's worth considering seeking diamond wire sawing for your project.

Cuts through almost any material

Diamond wire sawing can be used to cut through almost any material that is softer than diamond itself. This can include almost any material such as stone, masonry, enforced concrete and steel. The sheer strength of diamond wire sawing makes it a common choice for controlled demolition services, such as the safe and quick removal of concrete structures.

Precise technique

In addition to being powerful, diamond wire sawing is a precise cutting technique. It is particularly useful for situations where it is necessary to isolate and cut through thick, reinforced sections of material or shapes, which would be particularly awkward for more traditional cutting techniques. For this reason, wire saws are great for cutting through large sections of reinforced concrete like bridge sections, jetties, columns or beams.

Works in tight spaces

As the section can be reached with a wire, diamond wire sawing is a highly flexible process, making it ideal for use in areas where there is restricted access for more traditional cutting techniques, such as bridge decks. The flexibility of wire saws means that there are very few to zero restrictions on the depth or speed of the cut that they can perform – and they're fast too.

Experience has made us Smarter



Providing Sub-Sea Services Since 1999

Can be performed underwater

Often there are scenarios in which cutting is required in environments that are submerged underwater. Handily, diamond wire sawing works just as well underwater as it does above ground. That makes wire sawing an extremely useful technique for businesses such as water and construction companies for maintenance, repair or demolition of marine structures.

Safety Health and Environment

Minimal noise pollution. Dust free cutting

Cost

Costs are calculated of actual work performed and charged per m² of cutting compared to demolition hammers charged at a rate per Hr.

Experience

B-4 has done cutting in the port of Walvisbay doing minor works sub-sea with the demolition of the cope beam in the Small Craft Harbour for refurbishing.

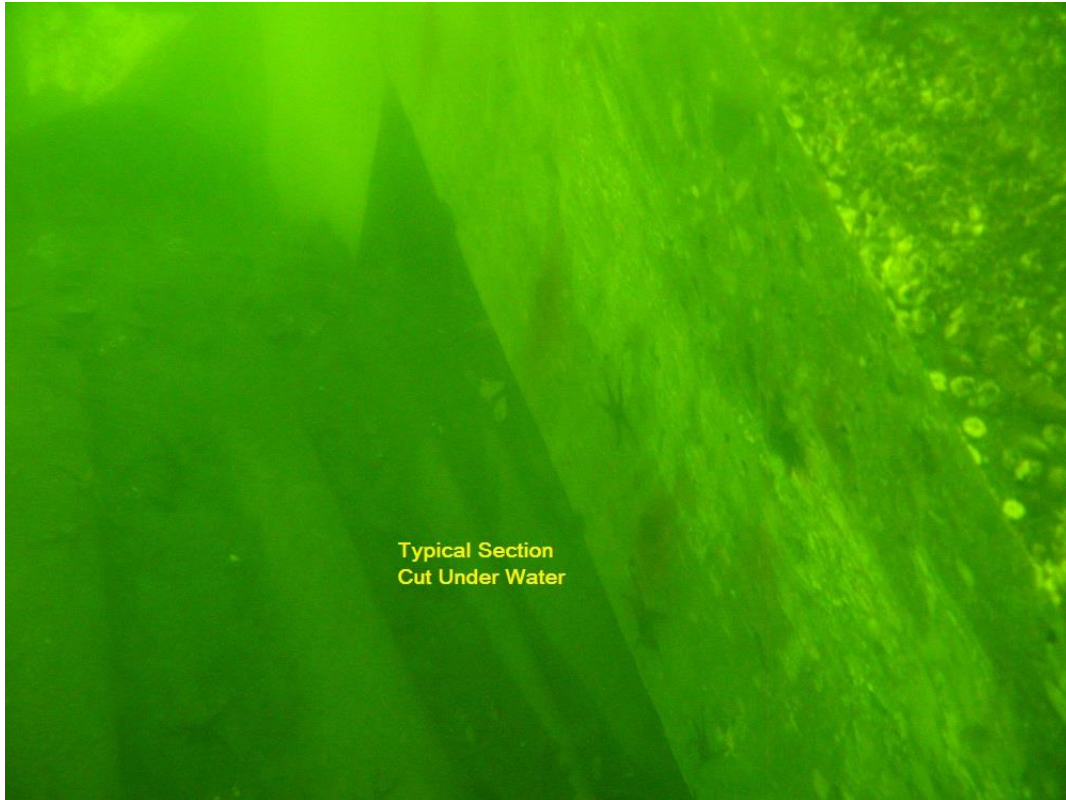
The teams are currently doing works on the New Port Extension – Port of Walvisbay. This has been on going and we have cut in the access of 1000m². Machines and rails where custom built for the works.

Gallery

Experience has made us Smarter



Providing Sub-Sea Services Since 1999



Experience has made us Smarter



Providing Sub-Sea Services Since 1999



Heavily Reinforced Concrete Beam
2m x 1.85m

Experience has made us Smarter



Providing Sub-Sea Services Since 1999



Cope Beam 10.4sqm Cut

Experience has made us Smarter



Providing Sub-Sea Services Since 1999



Typical Cut

Experience has made us Smarter



Providing Sub-Sea Services Since 1999



Retaining Wall Piles -
1.5m Diameter

For any further enquiries: info@b4diving.com/bres@b4diving.com

Experience has made us Smarter